

POSTEK GX Series

MULTI-DIMENSIONAL INTERACTIVE
SMART PRINTER



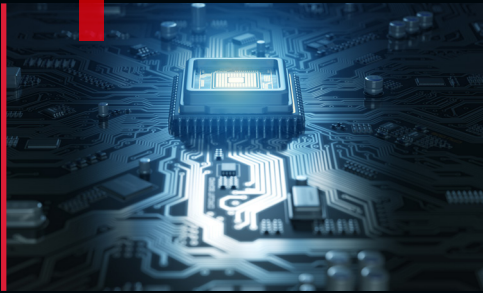
INDUSTRIAL POWER IN A COMPACT FORM

Built to merge commercial flexibility with true industrial strength, the GX Series delivers exceptional performance in a compact, durable frame — ready for the most demanding production environments.

MULTI-INTERACTIVE & SMART PRINTING

Overview

Across every model, POSTEK's Multi-Interactive Smart Printer architecture connects intelligence with industrial strength. These printers don't just execute print jobs — they communicate, coordinate, and even automate. From Python-based OX Script customization to cloud database access, POSTEK printers evolve from peripherals to intelligent hubs — becoming the brains of the operation in the connected manufacturing world.

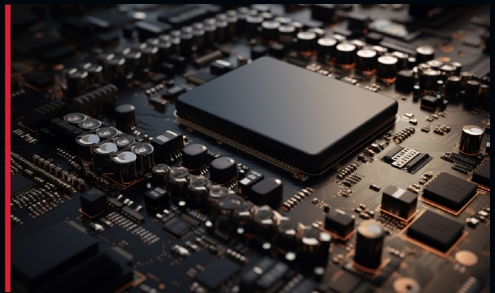


Power at the Core

Driven by a quad-core 1.8 GHz MPU, the GX Series delivers exceptional processing speed and graphics performance — ensuring flawless operation even under intensive workloads.

Mass Storage

Equipped with 2 GB RAM and 8 GB of onboard memory, the GX Series provides abundant space for storing graphics, fonts, templates, programs, and data. Whatever your workflow demands, GX keeps it ready at hand.



OX Script: Open Architecture Engine

A powerful tool for building customized, interactive apps that runs directly on the printer, allowing for features specific to your application.



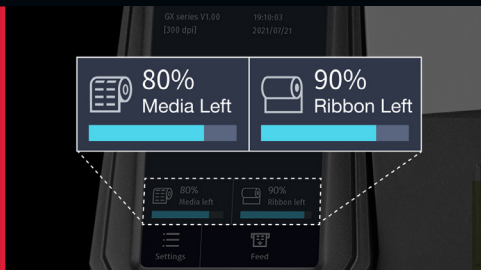


Cloud Connectivity & Offline Operation

GX Series provides cloud connectivity and offline operation with advanced stand-alone capability, enabling direct communication with cloud documents, broad device compatibility, and seamless control of peripheral devices.

MES/ERP Integration

OX Script introduces a new way of connecting with MES/ERP systems by making the printer the operational hub. This allows for flexible handling of complex tasks. Whether adding new variables or adjusting formatting, you can do it directly on the printer, making required updates independent of complex MES/ERP system upgrades.

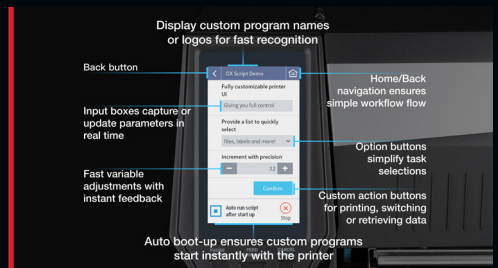


Device Management Features

A streamlined system that lets you check consumables instantly, manage accounts securely, switch label sizes quickly, maintain precise printing, and adjust label positioning with ease.

An Intuitive, Personalized User Interface

With a drastically simplified development process, OX Script provides unprecedented user-friendliness by enabling the creation of intuitive, personalized interfaces specific to each user's application.



Smart Assistant AVA

Powered by the latest DeepSeek model, AVA offers clear, real-time guidance for your printing tasks, quickly identifies issues, and connects you to POSTEK tech support when needed.

FEATURES



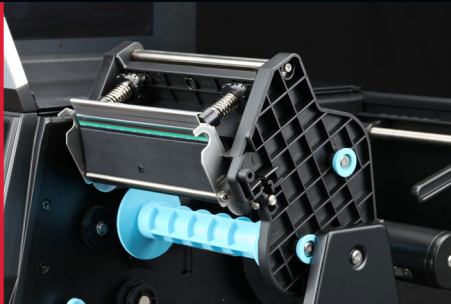
Compact Footprint

A new standard in spatial efficiency. The GX Series fits effortlessly where others can't — perfect for facilities that demand high output without sacrificing workspace.



Rugged Metal Construction

Encased in corrosion-resistant, heavy-duty metal with scratch protection, ensuring stability and longevity even in tough production conditions.



Optimized Print Engine

A precision-built metal chassis ensures stability and high-quality printing under continuous, demanding operation. The flip-up printhead design simplifies media loading and replacement.



Quiet Performance

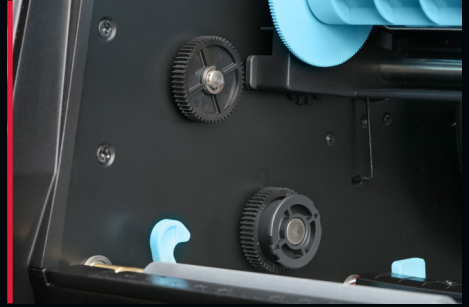
Low-noise engineering minimizes operational sound, keeping your workspace productive and comfortable.





Adjustable Ribbon Tension System

Intuitive dual-knob adjustment for ribbon supply and take-up ensures smooth operation and perfect print alignment.



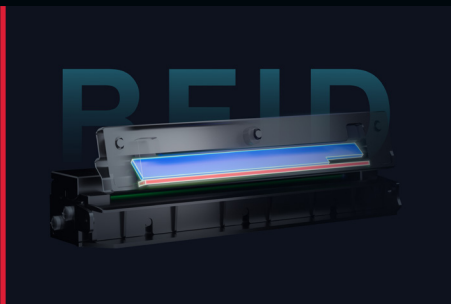
HEAT™ Technology

Powered by one of the most advanced quad-core applications processors, the POSTEK GX series printer takes full advantage of the cutting-edge HEAT™ printing technology, providing the best in class printout qualities. Intelligent thermal control ensures pixel-perfect consistency and sharpness in every print.



Advanced Dynamic Adaptive Precision Tuning

Ensures vertical printing accuracy with a calibration precision of $\pm 0.3\text{mm}$ over a 200mm print length, achieving up to $\pm 0.1\text{mm}$ under optimal conditions. It effectively eliminates printing distortion caused by platen wear, paper thickness changes, or surface friction differences. This significantly enhances component durability and reduces the frequency of platen roller replacements.



Accurate. Consistent. Efficient.

The GX RFID Series features a precision single-antenna RFID encoder, engineered for stable, reliable encoding of RFID tags. Its intelligent timing algorithm coordinates the printing and encoding process smoothly, ensuring efficient production without sacrificing accuracy.

* Available for GXr

SPECIFICATIONS

Model	GX2	GX3	GX6
Model with RFID	GX2r	GX3r	GX6r
Print Mode	Direct Thermal and Thermal Transfer		
Print Resolution	203 dpi	300 dpi	600 dpi
Max Print Speed	10 ips (254 mm/s)	8 ips (203.2 mm/s)	5 ips (127 mm/s)
Max Print Width	4.25" (108 mm)	4.16" (105.7 mm)	4.16" (105.6 mm)
Max Print Length	196" (5000 mm)		
MPU	64-bit, quad core, maximum operating frequency 1.8 GHz		
Memory	2 GB DDR RAM, 8 GB Flash ROM		
Wireless Module	WiFi IEEE 802.11a/b/g/n/ac/ax, 2.4/5.8 GHz, Bluetooth 5.0		
HEAT™ Level *	I		
Open Architecture Engine	OX Script: A Python-based automation engine for industrial printers - enabling direct device control, smart MES/ERP integration, and cloud-ready workflows.		
Signature Features & Configuration Method	Signature Features: Account Management, Label Formats Management, Remaining Amount of Media & Ribbon Monitor, Media Feed Calibration Configuration Method: UI and POSTEK APP		
RFID Encoder	Supports UHF EPC Gen 2, ISO 18000-6C protocols (Only available for RFID models)		
Media Roll	Maximum Media Width: 4.41" (112 mm) Minimum Media Width: 0.98" (25 mm) Maximum Outer Diameter: 6" (152 mm) Inner Diameter: 1.5" (38 mm) / 3" (76.2 mm) (optional)		
Minimum Label Length	Tear-off: 0.2" (5 mm)		
	Peel-off: 0.47" (12 mm)		
	Cutter: A150S/A400S/A400P: 0.79" (20 mm) AG120S/AG300S: 0.51" (13 mm) HG400S: 0.59" (15 mm)		
Media Thickness	0.003" ~ 0.008" (0.08 ~ 0.2 mm), including liner		
Ribbon	Maximum Length: 984.25' (300 m) Maximum Outer Diameter: 2.75" (70 mm) Inner Diameter: 1" (25.4 mm) Ink side: Out		
	Width: 0.79" ~ 4.33" (20 mm ~ 110 mm)		
Media Sensor	Reflective (Adjustable) and Transmissive (Two positions)		
Fonts	Five built-in dot matrix fonts, which include Basic Latin and Latin-1 Supplement character sets. Two built-in scalable fonts. One supports Latin, Greek and Cyrillic scripts, and the other is a GB2312 Chinese character set specifically. User downloadable TrueType fonts.		
Barcode Types	1D Barcode: Code 39, Code 93, Code 128/subset A,B,C, Codabar, Interleave 2 of 5, UPC A/E 2 and 5 add-on, EAN-13/8/128, UCC-128, GS1-128, etc. 2D Barcode: MaxiCode, PDF417, Data Matrix, QR Code, GS1 DataMatrix, GS1 QR Code, CS Code, etc.		
Interfaces	RS-232 Serial, 10/100/1000Mbps Ethernet, USB DEVICE 2.0, USB HOST		

LCD Display	4.5" LCD Capacitive Touchscreen
Power Source	100-240 VAC, 50-60 Hz
Weight	18 lbs (8.2 kgs)
Dimensions	W 10.58" (268.8mm) x D 13.88" (352.5mm) x H 7.80" (198.2mm)
Operating Environment	Temperature: 32° F ~ +104° F (0° C ~ 40° C) Relative humidity: 5% - 90% non-condensing Maximum Altitude: 5000 m
Storage Environment	Temperature: -40° F ~ +140° F (-40° C ~ 60° C) Relative humidity: 5% - 90% non-condensing

* HEAT™, or Heating Equilibrium Adaptive Tuning, is a POSTEK designed and developed cutting-edge technology that sets the benchmark for heat management in thermal printing. Printers equipped with HEAT™, the POSTEK printers can significantly improve their performance in the aspects of printout clarity and print speed. The HEAT™ level represents the fineness of the heating uniformity with level I being the finest.

Optional Configuration

External Label Rewinder	Maximum Rewind Roll Diameter: 9" (228.6 mm)						
External Media Stand	Maximum Outer Diameter: 10" (254 mm)						
Peeler*	A dedicated set of pinch roller assembly, including a label peeled-off sensor						
Cutters	Type	Rotary Cutter			Guillotine Cutter		
	Model	A150S	A400S	A400P	AG120S	AG300S	HG400S
	Max. Cut Width	120 mm	120 mm	120 mm	118 mm	118 mm	120 mm
	Min. Cut Length	20 mm	20 mm	20 mm	13 mm	13 mm	15 mm
	Cut Speed	0.8 sec/cut	0.8 sec/cut	0.15 sec/cut	0.35 sec/cut	0.45 sec/cut	0.15 sec/cut
	Cut Thickness (white cardboard paper)	0.20 mm	0.20-0.35 mm	0.35 mm	0.15 mm	0.30 mm	0.40 mm
	Cuts Guaranteed	600,000	600,000	600,000	600,000	600,000	600,000

* Factory dependent.





POSTEK

RUGGED PARTS, DURABLE MACHINES

POSTEK ELECTRONICS CO., LTD.

Wisdom Plaza, Block B, Tower 2, 18 Floor
Qiaoxiang Road, Nanshan District
518052 Shenzhen, Guangdong, China

Hotline: (+86) 755 83240988 ext.818
Email: overseas@postek.com.cn
Website: www.postekchina.com

POSTEK US INC.

13809 Research Blvd, STE 500
Austin Texas 78750
United States

Email: Jarvis.lu@postekus.com
Website: www.postekus.com